



# Direct Drive Backward Inclined Fans for Dust Collectors - Type TCBI

**BULLETIN 330**  
June 2008

Twin City Fan is pleased to introduce the type TCBI Backward Inclined fan specially designed for dust collector top or side mounting. These fans feature a high-efficiency, non-overloading steel impeller suitable for handling a relatively clean airstream. The impeller mounts directly to the motor (TEFC) in an AMCA arrangement No. 4. The rotating assembly is precision balanced prior to shipment.

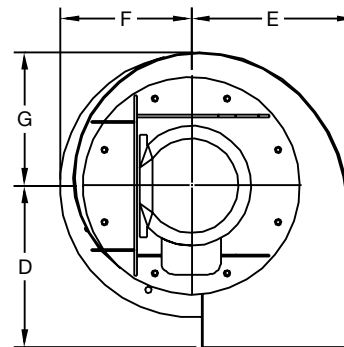
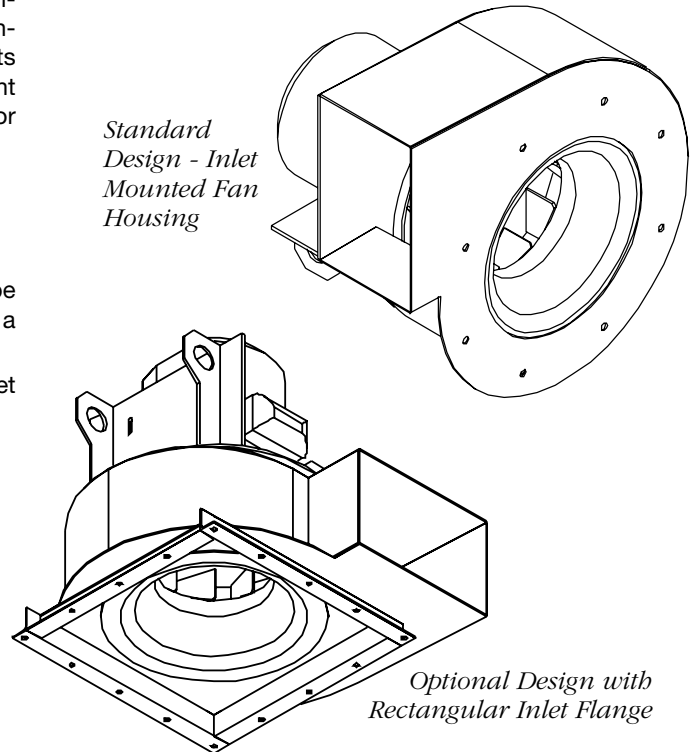
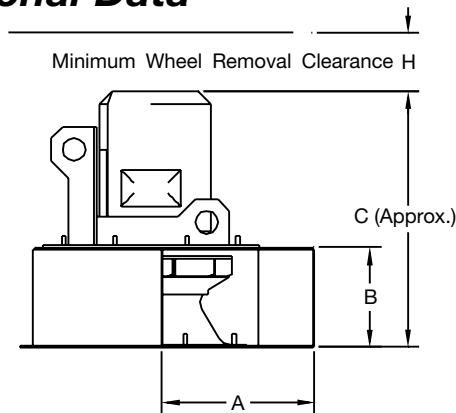
## Choice of Mounting

- Standard design allows for the fan housing to be bolted directly to the dust collector with motor in a vertical or horizontal position.
- Optional design is available with a rectangular inlet flange.

## Optional Accessories

- Built-In Outlet Damper
- Outlet Silencer
- Outlet Flange, Punched
- Aluminum Impeller
- Explosion Proof Motors
- Premium Efficiency Motors

## Dimensional Data



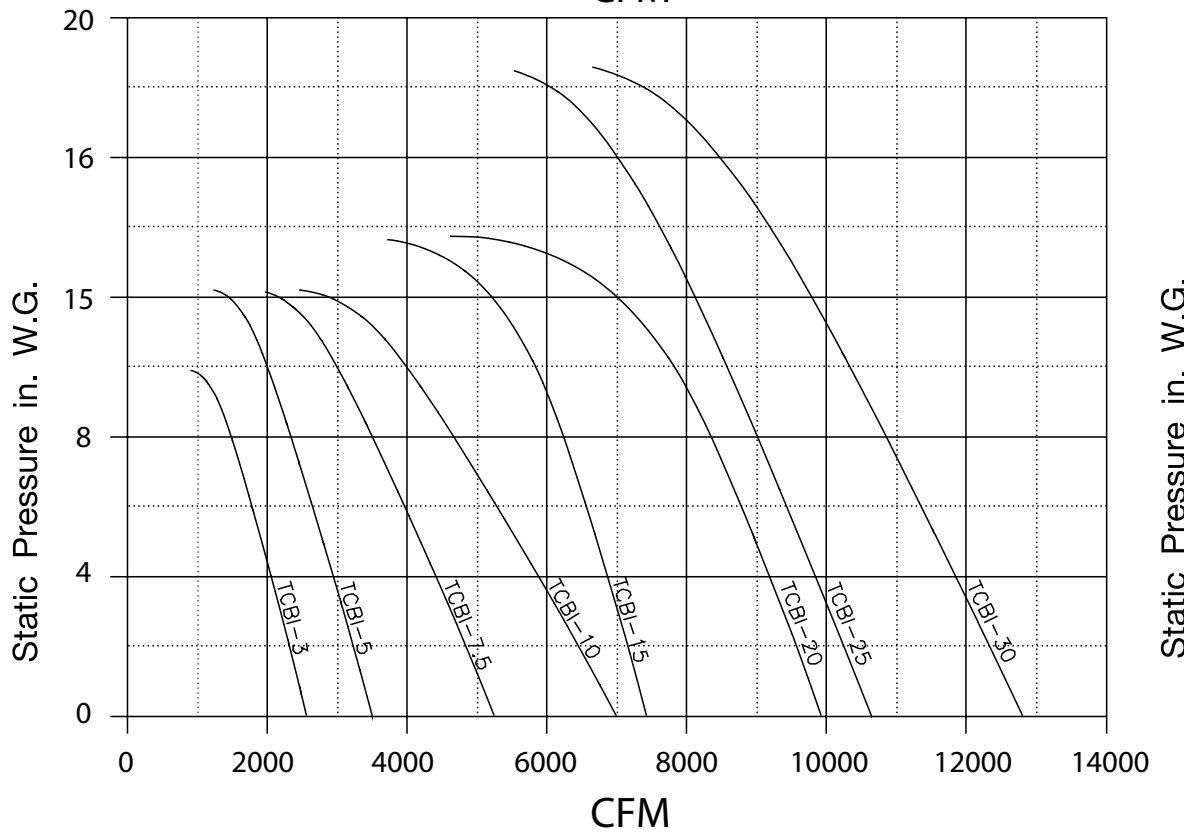
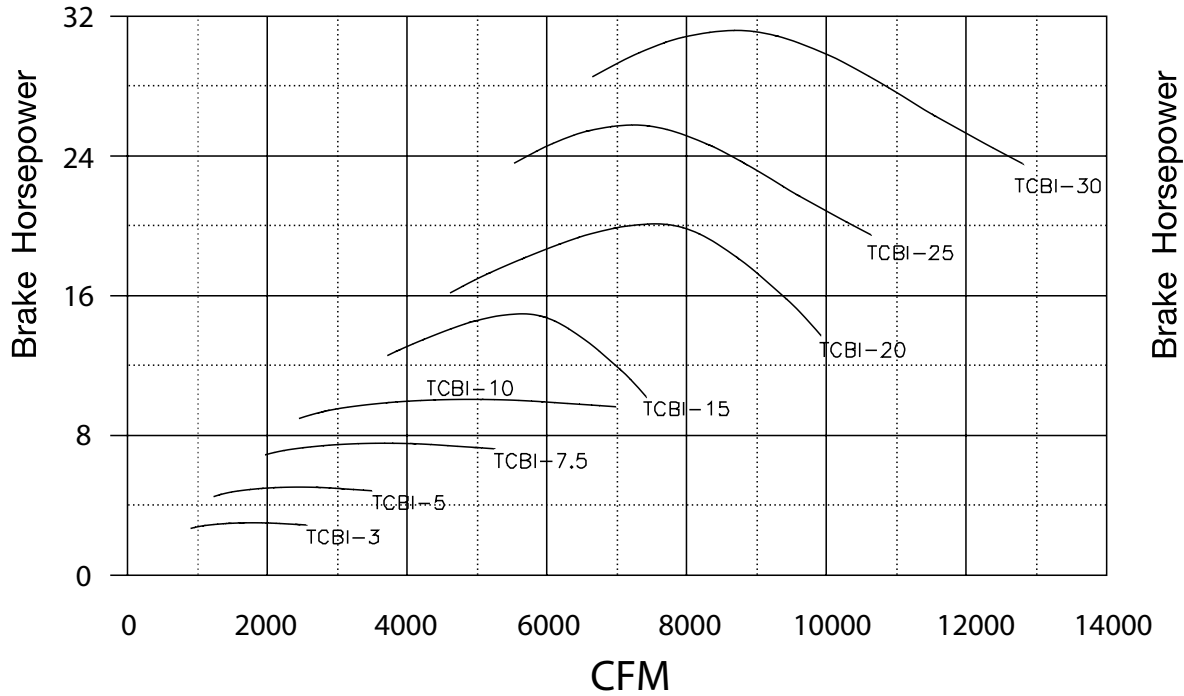
TCBI	A	B	C	D	E	F	G	H
3	13.41	8.72	22.38	14.13	14.31	10.31	11.69	5.50
5	14.78	9.40	23.13	14.13	15.87	11.45	12.97	5.75
7.5	14.78	10.69	27.81	14.13	15.87	11.45	12.97	7.00
10	14.78	11.44	28.56	14.13	15.87	11.45	12.97	7.75
15	19.91	11.94	33.94	17.13	18.88	15.06	18.08	8.00
20	19.91	13.57	35.56	17.13	18.88	15.06	18.08	10.00
25	22.13	13.25	39.13	17.13	20.96	16.74	20.10	9.00
30	22.13	14.25	40.13	17.13	20.96	16.74	20.10	10.00

DIMENSIONS ARE SUBJECT TO CHANGE. CERTIFIED DRAWINGS AVAILABLE ON REQUEST.

PERFORMANCE DATA LOCATED ON REVERSE SIDE.

# Performance Data

## TCBI 60 Cycle (3500 RPM)



# Twin City Fan & Blower

A Twin City Fan Company

5959 Trenton Lane · Minneapolis, MN 55442-3237  
 Phone (763) 551-7600 · Fax (763) 551-7601 · www.tcf.com

